

Eagle FC

Insulated Medium Duty Door

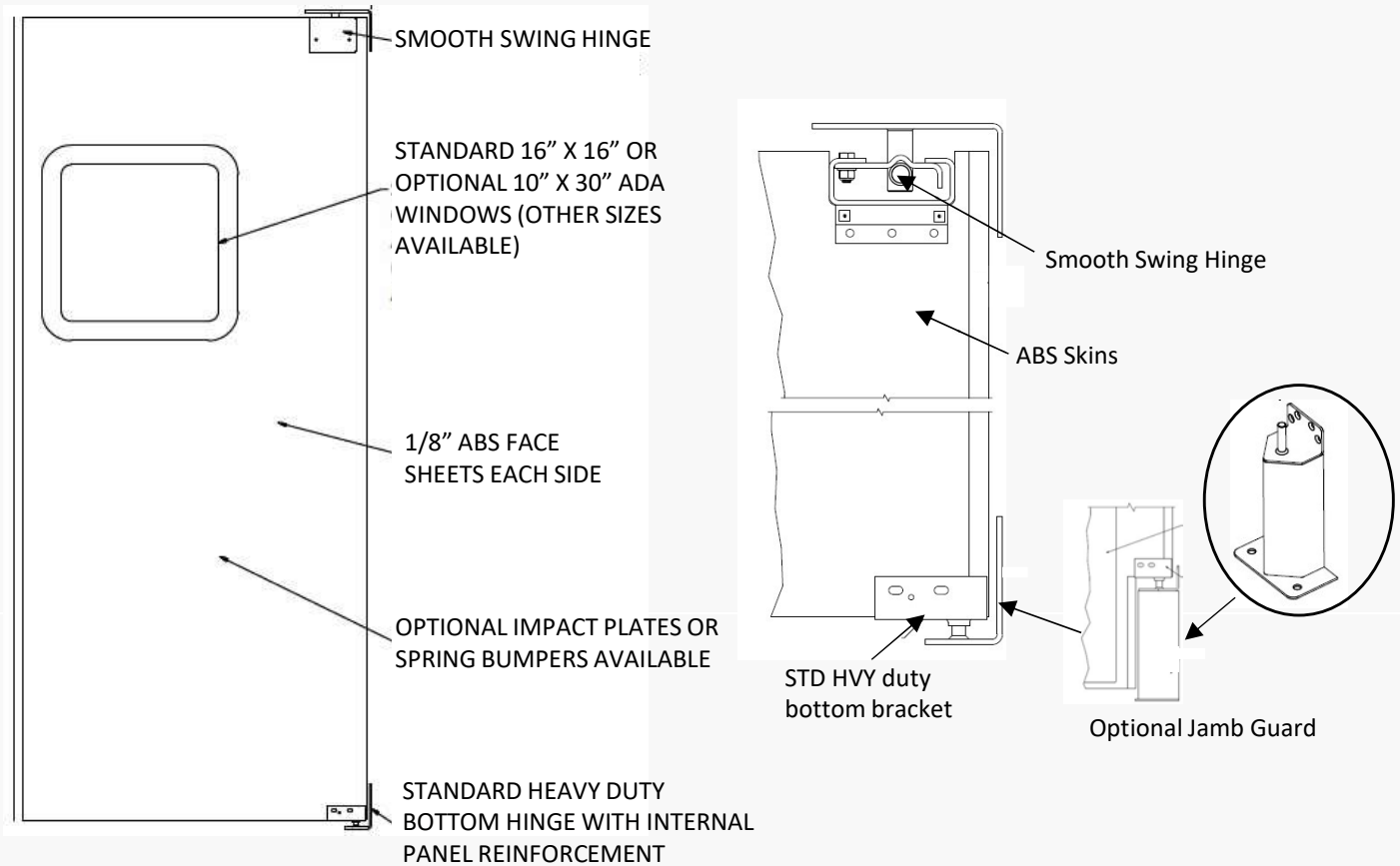


The Eagle-FC lightweight traffic door is designed for applications with personnel and non-motorized pallet traffic that require an insulated fully gasketed door. Available as a single panel or bi-parting door this product is perfect for supermarkets, stockrooms and light manufacturing applications where thermal separation is required with an impact traffic door.

- Foam core construction is clad with ABS, aluminum or stainless steel
- 1½" overall door thickness
- CFC-free urethane foam core with structural interlocking composite edges
- Face sheets are chemically bonded to core edges, preventing moisture penetration
- Smooth swing top hinge and bottom "L" bracket is standard
- Scratch resistant, clear acrylic window
- Full perimeter gasket is optional
- Available in a variety of colors

Eagle FC

Insulated Medium Duty Door



Specifications and Options:

- Panel Sizes Available: 24" - 60" Wide X up to 120" Tall per panel
- Core: 1¼" CFC-free urethane foam with welded composite edges
- Face Sheets: Standard 1/8" textured ABS. Optional: Aluminum or Stainless Steel
- Edge: Extruded polymer internal frame. Gasketed edge trim optional
- Hinge System: Smooth Swing upper hinge with Bottom L-bracket (std), Optional 3" x 9" Jamb Guard
- Standard Window Size: 16" x 16" injection molded ABS frame with 1/4" clear, scratch-resistant acrylic, 10" x 30" ADA compliant; other sizes available