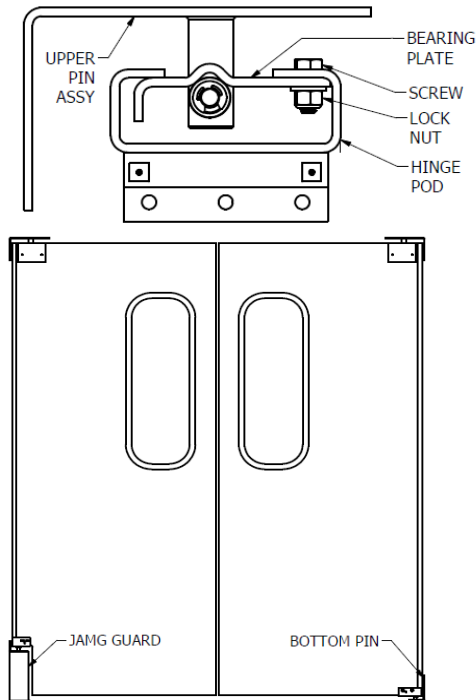




INSTALLATION INSTRUCTIONS & PART DIAGRAM

PHOENIX DOUBLE ACTION SMOOTH-SWING HARDWARE



JAMBS MUST BE SQUARE AND PLUMB.
A MINIMUM OF 3-1/2 INCH WIDE JAMBS
ARE REQUIRED TO MOUNT HARDWARE

1. Measure width and height of framed opening and compare width dimensions given at time of ordering. (This model was cut to the dimensions given by the customer and is not adaptable to fit into a different size opening.)
2. Remove screws and nuts from bearing plate/hinge pod assembly, leaving pod attached to door panel.
3. Position bottom pin assembly or jamb guard on floor and center in jamb. Secure to jamb using (4) 1-1/2" screws supplied. Bottom pin must be secured to floor using (2) 1/4" X 2-1/4" floor anchors supplied. Top pin assembly secures to the top with (4) screws and side jamb with (2) screws supplied. Note: top and bottom hinges must be plumb and aligned with each other.
4. Slip door over bottom pin and lift slightly to side door pod over bearing plate. Line up holes and insert bolts supplied. Partially install lock nuts, move door to closed position and secure lock nuts. Loosen and realign if necessary.
5. Install covers and secure (4) 1/2" screws supplied per door.

NOTE: BOTTOM PIN MUST BE FASTENED TO FLOOR

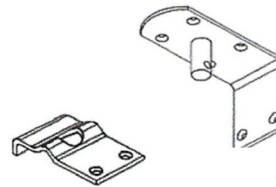
NOTE: HOLLOW METAL JAMBS DRILL 7/32 PILOT HOLE FOR 9 GA AND THINNER MATERIAL

Top Pin Assy

- (6) 1/4"-20 x 1 Phillips Flat Head Thread Cutting Screws
- (6) #14 x 1 1/2" Phillips Flat Head Sheet Metal/Wood Screws

Bearing Plate with (2) 5/16"-18 Screws, (2) 5/16"-18 Lock Nut

- (1) 3/8" Axle
- (2) Rollers
- (2) Klipring

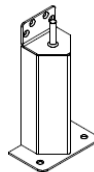


- (2) Aluminum Covers, (4) Screw
- Or (2) SS Covers, (4) Screws
- Or (2) ABS Covers, (4) Screws



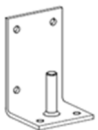
Jamb Guard

- (4) 1/4" - 20 X 1" Hex Head Thread Cutting Screws
- (4) #14 - 1 1/2" Hex Head Sheet Metal/Wood Screws
- (2) 3/8" x 2 1/4" Floor Anchors



Bottom Pin Assy

- (4) 1/4"-20 X 1" Hex Head Thread Cutting Screws
- (4) #14 x 1 1/2" Hex Head Sheet Metal/Wood Screws
- (2) 1/4" x 2 1/4" Floor Anchors



FOR ANY HELP PLEASE CALL TOLL FREE 888-263-4082 – TECHNICAL DEPT